

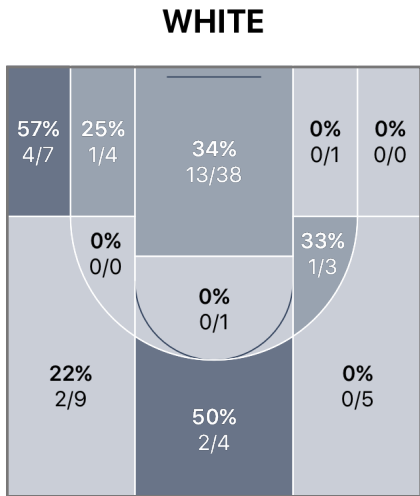
Southern Stampede 66 - 62 Houston Hoops

Home

Tournament

Saturday, April 16, 2016

WHITE 66 **Game Over** **62 RED**



| | | |
|-------|-----------|-----------|
| | 1 | 2 |
| WHITE | 23 | 43 |
| RED | 31 | 31 |

REBOUNDS

DEF REB: 26 - 30

OFF REB: 22 - 13

2nd CHNCE PTS: 18 - 7

POINTS

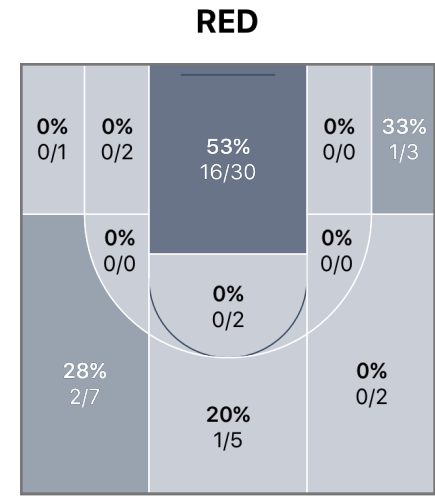
| WHITE | RED |
|-----------------|-----------------|
| 32% FG% | 38% FG% |
| 32% 3PT FG% | 22% 3PT FG% |
| 60% FT% | 56% FT% |
| 26 PTS IN PAINT | 32 PTS IN PAINT |

TURNOVERS

TO: 13 - 17

PTS OFF TO: 12 - 14

STL: 6 - 5




Team Totals


| | FGM-A | 3PM-A | FTM-A | PIP | OREB | DREB | REB | 2CP | AST | STL | POT | BLK | TO | PF | PTS |
|------------------------|-------|-------|-------|-----|------|------|-----|-----|-----|-----|-----|-----|----|----|-----|
| SOUTHERN STA... | 23-72 | 8-25 | 12-20 | 26 | 22 | 26 | 48 | 18 | 10 | 6 | 12 | 5 | 13 | 23 | 66 |
| HOUSTON HOOPS | 20-52 | 4-18 | 18-32 | 32 | 13 | 30 | 43 | 7 | 10 | 5 | 14 | 7 | 17 | 21 | 62 |

| | | | |
|-----------------------------------|---------------------------|----------------------------|---------------------------------|
| MIN - Minutes Played | PIP - Points in the Paint | 2CP - 2nd Chance Points | BLK - Blocks |
| FGM-A - Field Goal Makes/Attempts | OREB - Offensive Rebounds | AST - Assists | TO - Turnovers |
| 3PM-A - 3 Point Makes/Attempts | DREB - Defensive Rebounds | STL - Steals | PF - Personal & Technical Fouls |
| FTM-A - Free Throw Makes/Attempts | REB - Rebounds | POT - Points off Turnovers | PTS - Total Points |

Southern Stampede 66 - 62 Houston Hoops

 Home

 Tournament

 Saturday, April 16, 2016

Southern Stampede Stats

| PLAYERS | MIN | FGM-A | 3PM-A | FTM-A | PIP | OREB | DREB | REB | AST | STL | POT | BLK | TO | PF | PTS |
|-------------------|-----|--------------|-------------|--------------|-----------|-----------|-----------|-----------|-----------|----------|-----------|----------|-----------|-----------|-----------|
| #2, C Sexton | 22 | 10-26 | 6-14 | 9-12 | 6 | 3 | 2 | 5 | 0 | 1 | 8 | 0 | 3 | 3 | 35 |
| #1, A Durham, Jr. | 30 | 4-13 | 1-3 | 1-3 | 4 | 1 | 5 | 6 | 4 | 1 | 0 | 0 | 5 | 4 | 10 |
| #42, C Agbo | 21 | 4-8 | 0-0 | 1-3 | 8 | 7 | 5 | 12 | 0 | 0 | 2 | 2 | 2 | 4 | 9 |
| #3, Z Cooks | 29 | 2-9 | 0-3 | 0-0 | 4 | 2 | 4 | 6 | 6 | 4 | 2 | 0 | 1 | 3 | 4 |
| #32, T Massenburg | 25 | 1-7 | 0-1 | 1-2 | 2 | 4 | 3 | 7 | 0 | 0 | 0 | 2 | 0 | 4 | 3 |
| #5, K Eskridge | 12 | 1-6 | 1-4 | 0-0 | 0 | 1 | 4 | 5 | 0 | 0 | 0 | 0 | 0 | 2 | 3 |
| #4, R Taylor | 3 | 1-1 | 0-0 | 0-0 | 2 | 0 | 1 | 1 | 0 | 0 | 0 | 0 | 0 | 1 | 2 |
| #33, R Hill, Jr. | 15 | 0-2 | 0-0 | 0-0 | 0 | 3 | 2 | 5 | 0 | 0 | 0 | 1 | 1 | 2 | 0 |
| #10, J Durham | 0 | 0-0 | 0-0 | 0-0 | 0 | 0 | 0 | 0 | 0 | 0 | 0 | 0 | 0 | 0 | 0 |
| #12, J Estime | 0 | 0-0 | 0-0 | 0-0 | 0 | 0 | 0 | 0 | 0 | 0 | 0 | 0 | 0 | 0 | 0 |
| #23, J Hillery | 2 | 0-0 | 0-0 | 0-0 | 0 | 0 | 0 | 0 | 0 | 0 | 0 | 0 | 0 | 0 | 0 |
| Unassigned/Team | | 0-0 | 0-0 | 0-0 | 0 | 1 | 0 | 1 | 0 | 0 | 0 | 0 | 1 | 0 | 0 |
| Total | | 23-72 | 8-25 | 12-20 | 26 | 22 | 26 | 48 | 10 | 6 | 12 | 5 | 13 | 23 | 66 |


FLAGRANT FOULS

SOUTHERN... None


TECHNICAL FOULS

SOUTHERN... None

Southern Stampede 66 - 62 Houston Hoops

 Home

 Tournament

 Saturday, April 16, 2016

Houston Hoops Stats

| PLAYERS | MIN | FGM-A | 3PM-A | FTM-A | PIP | OREB | DREB | REB | AST | STL | POT | BLK | TO | PF | PTS |
|------------------|-----|-------|-------|-------|-----|------|------|-----|-----|-----|-----|-----|----|----|-----|
| #2, J Vanderbilt | 20 | 6-13 | 1-3 | 6-12 | 10 | 6 | 9 | 15 | 2 | 0 | 0 | 0 | 7 | 3 | 19 |
| #22, R Nembhard | 23 | 5-10 | 2-6 | 5-7 | 6 | 1 | 3 | 4 | 2 | 3 | 9 | 0 | 1 | 2 | 17 |
| #10, R Hamm | 27 | 4-8 | 1-3 | 2-2 | 6 | 2 | 6 | 8 | 0 | 0 | 2 | 3 | 1 | 3 | 11 |
| #0, J Chandler | 23 | 3-9 | 0-2 | 2-5 | 6 | 1 | 3 | 4 | 3 | 0 | 1 | 1 | 3 | 4 | 8 |
| #12, J Ledee | 10 | 1-5 | 0-2 | 3-3 | 2 | 1 | 2 | 3 | 0 | 1 | 0 | 0 | 1 | 2 | 5 |
| #5, C Alley, Jr. | 5 | 1-1 | 0-0 | 0-0 | 2 | 0 | 1 | 1 | 3 | 0 | 2 | 1 | 1 | 3 | 2 |
| #4, D Azore | 9 | 0-0 | 0-0 | 0-0 | 0 | 0 | 1 | 1 | 0 | 0 | 0 | 0 | 1 | 2 | 0 |
| #1, J Dockery | 3 | 0-0 | 0-0 | 0-0 | 0 | 0 | 0 | 0 | 0 | 0 | 0 | 0 | 1 | 0 | 0 |
| #11, M Strange | 0 | 0-0 | 0-0 | 0-0 | 0 | 0 | 0 | 0 | 0 | 0 | 0 | 0 | 0 | 0 | 0 |
| #14, I Jasey | 23 | 0-3 | 0-0 | 0-3 | 0 | 2 | 4 | 6 | 0 | 0 | 0 | 1 | 1 | 2 | 0 |
| #35, M Mayer | 7 | 0-3 | 0-2 | 0-0 | 0 | 0 | 1 | 1 | 0 | 1 | 0 | 0 | 0 | 0 | 0 |
| Unassigned/Team | | 0-0 | 0-0 | 0-0 | 0 | 0 | 0 | 0 | 0 | 0 | 0 | 1 | 0 | 0 | 0 |
| Total | | 20-52 | 4-18 | 18-32 | 32 | 13 | 30 | 43 | 10 | 5 | 14 | 7 | 17 | 21 | 62 |

FLAGRANT FOULS

HOUSTON H... None

TECHNICAL FOULS

HOUSTON H... None